

KONICA MINOLTA

workplacehub

**WORKPLACE
HUB PRO**
**RETHINK IT ON
YOUR TERMS**



Giving Shape to Ideas

Increasingly complex work environments are a challenge for every business. Thus, IT can be the biggest enabler, but also the worst bottleneck for workplace efficiency. Very often it is changing too fast to keep up.

TOP FIVE IT CHALLENGES OF SMBS



YOUR IT IS NOT FLEXIBLE ENOUGH TO KEEP UP WITH YOUR BUSINESS

Non-scalable IT infrastructure is holding you back from doing your work most efficiently. This can lead to lack of agility and flexibility growing your business.



THE COMPLEX MANAGEMENT AND MAINTENANCE OF YOUR IT CAUSES YOU HEADACHE

Keeping your office IT up-to-date, handling technical issues and monitoring your systems can be a time-consuming and frustrating task - especially when no or only few internal IT resources are available.



OFFICE IT COSTS ARE HIGH AND HARD TO PREDICT

Having complete transparency of your IT operations is a huge task, considering different teams, departments and individual users. Precise cost control is necessary to ensure proper business planning.



WORRIES ABOUT THE SECURITY OF YOUR DATA AND SYSTEMS KEEP YOU UP AT NIGHT

The safety of sensitive company data is key. A system breakdown or virus attack can cause big damage to your business in case no backup solution and recovery strategy is in place. In addition, ensuring GDPR compliance is a complex topic for businesses and can result in high penalties in case of a breach.



REMOTE WORKING BECOMES THE NEW NORMAL

Working from home or other places away from your physical workplace is no longer a convenience, but a necessity to keep your business running. Being equipped with the right tools to keep your teams' productivity and efficiency high is crucial.

With Workplace Hub, these challenges become a thing of the past.

WORKPLACE HUB IS YOUR ENABLER FOR WORK SIMPLICITY. **INTELLIGENT. CONNECTED. SECURE.**

Workplace Hub frees you up from daily IT hassles. Let us take care about your IT and application management, so you can keep your business running and concentrate on high quality solutions for your customers.

We are specialised on your small business' challenges, delivering holistic consultancy and support. We are close by to help quickly in case of IT emergency.

Workplace Hub combines industry-leading hardware, software and security with a full suite of managed IT services and solutions into a single, scalable IT service.

With one contract and a fixed monthly price, Workplace Hub puts you in control of your IT, while providing the convenience of working with a single provider for all of your technology needs both now, and for the future.

And for peace of mind, the all-in-one IT ecosystem has you covered with secure back-up, maximum network protection, and is monitored 24/7 and fully managed by Konica Minolta.

We Rethink the workplace, so it works for you.

INTRODUCING WORKPLACE HUB PRO

With Workplace Hub Pro, the exemplary Workplace Hub ecosystem combines with high quality bizhub® i-Series printing and scanning capabilities to deliver a powerful solution for your connected office.

A comprehensive portfolio of solutions including print and document management, Intelligent Video Security and more takes business efficiency to a whole new level of potential.

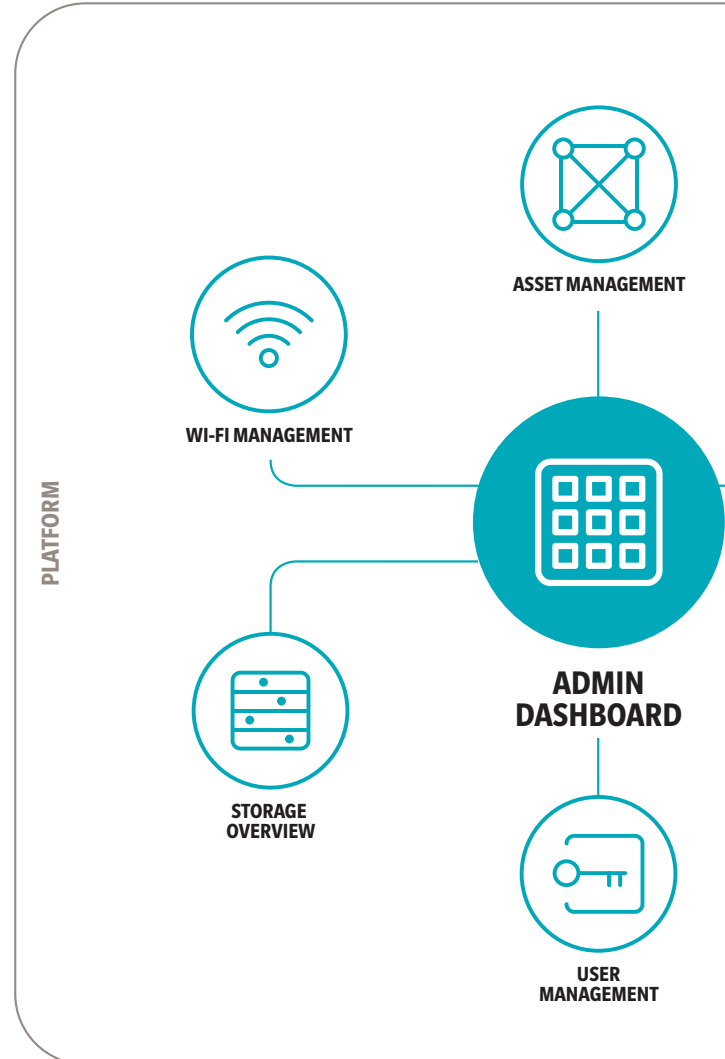
See where Pro can take you today.

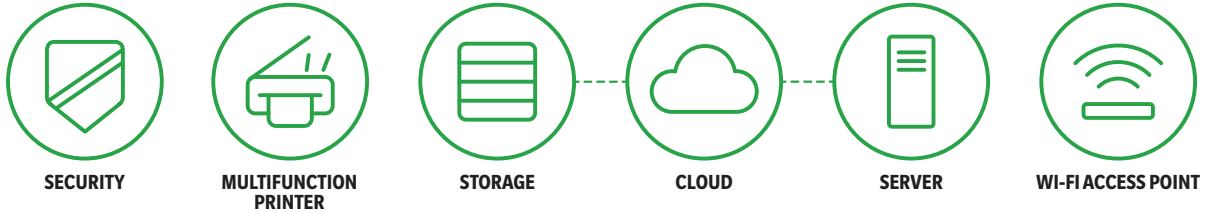
Rethink: IT on your terms.

ONE COMPLETE ECOSYSTEM

Workplace Hub unifies your IT and creates an all-in-one ecosystem that makes working easier and more productive.

- A whole range of IT tasks managed for you, from setup and installation to ongoing monitoring and management and 24/7 helpdesk support, freeing up your time and resources.
- Access next generation IT from your multi-function printer. Everything is brought together seamlessly increasing the value of your existing office space.
- Manage your users, guest and private Wi-Fi effectively through web based interface.





IT INFRASTRUCTURE



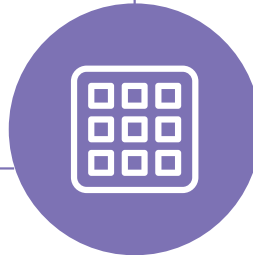
APPLICATION MANAGEMENT



FILE SHARING



KONICA MINOLTA MARKETPLACE



USER APPLICATIONS



SMART FEATURES

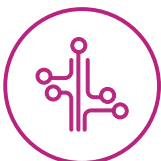


WORKPLACE GO

PLATFORM



MANAGED IT AND APPLICATION SERVICES



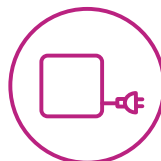
PLATFORM HOSTING VMs



SYSTEM SECURITY & DATA PROTECTION



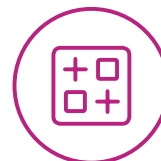
STORAGE & BACK-UP MANAGEMENT



ONSITE INSTALLATION & SUPPORT



ONGOING PROACTIVE MANAGEMENT



PROFESSIONAL IT SERVICES



HELPDESK



MANAGED IT AND APPLICATION SERVICES

Free up your time and energy by letting us take care of your IT management.

We're here to look after complex, critical, or time-consuming tasks, empowering you to focus on your business. We can manage a whole range of functions such as storage, security, installation, and migration. The helpdesk ensures we're always available for support.



PLATFORM HOSTING VMS

Hosting your business applications on Workplace Hub can centralise and minimise your legacy IT footprint.

- Applications are always securely protected, backed up, and proactively monitored
- Seamlessly collaborate with existing print/document related software



HELPDESK

A range of support is available, from administration of your Workplace Hub.



SYSTEM SECURITY & DATA PROTECTION

We're fully equipped to manage the complex task of protecting your data and systems from malicious attacks. We use Sophos' unified threat management, which offers sophisticated security to keep you safe at all times.

- All data stored on Workplace Hub is protected
- Quick and easy security level changes are available with a simple request



STORAGE & BACK-UP MANAGEMENT

Robust data management and storage so you never lose critical information.

- Save your data locally or in the cloud. All local data is backed up to a Network Attached Storage (NAS) device, All data backed to the cloud are securely stored at Konica Minolta data centers that comply with local country data storage regulations
- All data is encrypted for added security



ONSITE INSTALLATION & SUPPORT*

We'll complete the initial setup, configuration and training so Workplace Hub Pro works perfectly from the outset.

- Network, Wi-Fi, multifunction printer setup
- Conversion of existing 2012 or higher servers
- Migration and integration of existing complex data
- Physical security against theft
- Training on system usage
- Upgrading expired systems such as Windows Server 2008



ONGOING PROACTIVE MANAGEMENT

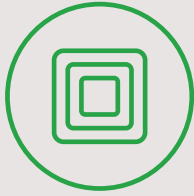
Once Workplace Hub Pro is installed, we remotely monitor and manage the entire system for you, finding and fixing problems before they impact your business.



PROFESSIONAL IT SERVICES

We can also provide further support for your specific IT projects, including consulting and installation of additional equipment, software and services.

* Some of these services may be billable. Please contact your sales representative for further information.



IT INFRASTRUCTURE

Everything brought together seamlessly, using technology that evolves with your business.

Workplace Hub Pro includes a multifunction printer, data storage, Hewlett Packard Enterprise server, Firewall with Unified Threat Management (UTM), Wi-Fi and Wi-Fi access points. It's designed to evolve continually as system updates and new features become available.



SECURITY

Unrivalled system security with Sophos XG Firewall.

- Advanced VPN Technologies
- Email Protection
- Anti-Spam
- Next-Gen Intrusion Prevention System
- Automatically responds to incidents
- Secure wireless network



MULTIFUNCTION PRINTER

Housing a powerful engine, the bizhub® i-Series allows for quick-response, high-performance operations whenever and wherever.*

- Konica Minolta's bizhub i-Series A3 Colour MFP range
- High resolution printing, scanning, copying or faxing
- Scanned documents and incoming faxes are digitally converted to ensure anywhere access
- Print management applications (cost management, secure print, scan workflows) are seamlessly integrated



STORAGE

A data storage solution that grows with your business and never interrupts your service.



CLOUD

Your local server is backed up by Konica Minolta data centers that comply with country regulations providing additional security for your data.



SERVER

Customised Hewlett Packard Enterprise server.

- Reduced air friction and noise
- Integrated battery backup
- Uninterrupted Power Supply (UPS) available
- Intel® Xeon® scalable processor



WI-FI ACCESS POINT

Trouble-free, secure Wi-Fi that's easy to configure and highly flexible. We make sure your Wi-Fi access points meet your demands and both your employees and guests enjoy connectivity throughout your premises.

*Various model specifications are available to support your printing and scanning needs. Contact your local sales representative for more information.



USER APPLICATIONS*

No matter what the future will bring – we've got you covered.

Our scalable service portfolio is flexibly built and adapts to the development of your work environment by bringing you the applications you need, when you need them.



WORKPLACE GO †

A simple way to access all your key information from one place to improve productivity, collaboration, and communication.

- Customise the interface to your company and culture
- Access all your individual information for your day through 'My Board'
- Track tasks, set deadlines or find and share key project information across project spaces, team groups or specific communities through 'My Team'
- Find essential company information and documents in a sophisticated 'My Company' space
- Cloud-based tools that ensure mobile access, security and access to data anywhere



FILE SHARING

Share ideas immediately and securely with colleagues and collaborators.

- Easy-to-use web interface for files stored on-premise
- Data is encrypted automatically
- Notifications help make it easy to follow communication



KONICA MINOLTA MARKETPLACE

Konica Minolta MarketPlace is the easy way to browse, purchase and download apps specifically designed for your Konica Minolta multifunction printers (MFP).

- Scan to Cloud Apps (OneDrive, Google Drive, SharePoint and more)
- Customisable Control Panel - Just as all of the departments in your business aren't the same, your bizhub MFPs don't have to be either with customisable finger-swipe panels that help increase productivity.
- Cutting-Edge Technology - With new apps continually added to the Konica Minolta MarketPlace, you'll always have the latest advances in technology right at your fingertips.



SMART FEATURES

A continually evolving and growing suite of intelligent applications that improve workplace productivity.

- Smart features are added as they become available

* Accessed via a web-based interface. Browser compatibility: Chrome, Firefox, Microsoft Edge.

† Optional add-on. Requires an Office 365 license.



ADMIN DASHBOARD*

True, functional simplicity. The Admin Dashboard puts everything in one place, with you in control.

You now get a complete overview of your company's users, assets, applications, server, storage, Guest and Private Wi-Fi, and so on. Tasks become easy, whether reviewing resource usage, reviewing the status of service contracts, or managing user rights.



STORAGE OVERVIEW

Review your storage at the click of a button.

- Save your data locally or in the cloud. All data is backed up at Konica Minolta data centers or on a local Network Attached Storage (NAS) device



ASSET MANAGEMENT

A simple way to review and manage all your hardware and software licenses.

- One simple overview of who is using what within your company
- Assign hardware and software to individuals
- Re-assign assets which are automatically freed up if a colleague changes role or leaves



USER MANAGEMENT

A highly efficient way to manage users.

- Automatically synchronise with Microsoft's Active Directory and Azure Active Directory
- Define custom roles and application permissions for individuals
- Set specific authentication levels (e.g. passwords and ID cards)
- Make it simple to use external applications with a single sign-on. All the functionality you'd expect is there, such as managing forgotten passwords, password encryption and blocking of accounts after a number of failed attempts



APPLICATION MANAGEMENT

Easily manage and assign business applications.

- Quick overview of all your core applications such as file sharing, user management and Wi-Fi management
- Assign applications to relevant users



WI-FI MANAGEMENT

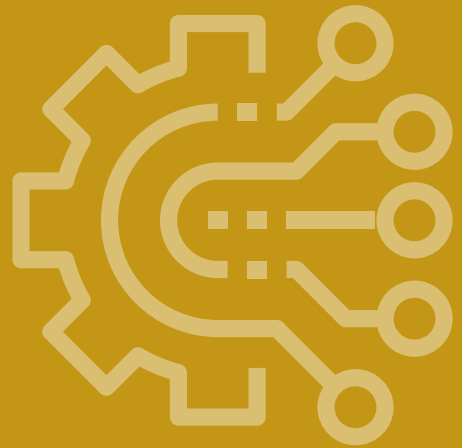
- Private Wi-Fi settings and employee user access
- Public Wi-Fi
 - Set time limits for visitor access
 - Once limit is reached Wi-Fi access is cancelled

* Accessed via a web-based interface. Browser compatibility: Chrome, Firefox, Microsoft Edge.

YOUR BENEFITS AT A GLANCE

Workplace Hub integrates physically and virtually into the SMB office environment and brings different parts of your IT environment into one integrated service - so you don't need to handle a range of tools, systems and vendors anymore.

- Provides you with peace of mind about your IT infrastructure and security
- Reduces total IT spend and cost predictability for life of term
- Gives you freedom to focus on what matters most – growing your business
- Scalability offers customisation to meet your individual needs and follow the development of your business
- Workplace Go provides the digital workplace for your communication, collaboration, productivity and social networking needs - anywhere



FEATURES OVERVIEW

Features*	Notes*
Active directory integration	Compatible with AD 2012, 2016 and Azure Active Directory
Backup	Back up of your files, virtual machines and individual settings to cloud, local storage, or both
Browser support	Chrome, Firefox and Microsoft Edge
Certifications	Contributes to a GDPR compliant environment
File sharing	Upload and share files internally Supports SMB drives and Microsoft OneDrive
IC card reader	MFP authentication Other options available
Identity management	Simplified user and role management with active directory integration. Options include: <ul style="list-style-type: none"> – Active Directory as a source of identity – Azure Active Directory as a source of identity – Workplace Hub maintains identity itself
Konica Minolta MarketPlace	Purchase applications License management
MFP applications – Open API	Open API support App server for bizhub MFP fleet IWS App Support
MFP hardware	bizhub i-Series A3 colour MFP range
Print and copy speed¹	25ppm – 65ppm / A4
Remote access (4G)	4G connection will be established for troubleshooting by Konica Minolta services when main internet connection is disconnected
Remote monitoring and management	Fully managed by Konica Minolta
Scan speed (simplex/duplex)¹	100/200ipm – 140/280ipm
Unified threat management	Based on Sophos XG Firewall
Virtualisation layer	Install and run customised virtual machines with the latest 64-bit Windows OSs Added support for remote access to virtual machines
VPN	Full VPN functionality for secure remote access
Wi-Fi management	Configure and manage private and public networks, using Sophos access points
Workplace Go	Optional add-on. Requires an Office 365 license.



* Final product features may vary depending on customers' individual requirements.

¹ Various model specifications are available to support your printing and scanning needs. Contact your local sales representative for more information.

“ TAKE THE IDEA OF A
BETTER WAY TO WORK
**AND MAKE
IT REAL”**

OUR PROMISE

As a global company with a strong local service network in over 150 countries, Konica Minolta helps you reach the next level in the digital maturity of your organisation, enabling you to run a successful, protected and sustainable organisation in an ever-changing world.

Through our long-standing experience in the management of printing, combined with strong expertise in IT services, we deliver the Intelligent Connected Workplace on your terms.

Recognised for our Smart Workplace Vision (Keypoint Intelligence, 2018), we are your partner identifying and unlocking the potential digitalisation holds for you.

OUR PARTNERS

Acronis



Hewlett Packard
Enterprise

 Microsoft

SOPHOS